

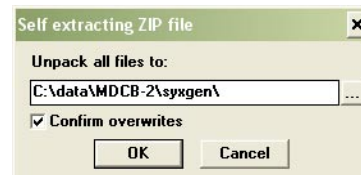
INSTALLATION / LAUNCHING

We have prepared software generator for easy creation of SysEx messages for programming of MXC-56 interface. Any programming message can be created with the help of this generator without difficult calculation of hexadecimal numbers. Generator is based on Java scripts so it is possible to use it with any operation system, but a browser (MS-Explorer, Netscape, etc.) must be installed on the computer.

Program can be launched either directly from supplemental CD-ROM or from hard disk of a PC. If you choose to launch the program from hard-disc, it is necessary to copy "index.html", "MXC-56_system.html", "MXC-56_output.html", "MXC-56_display.html", "MXC-56_help.html" files and subfolder "media" from "support\syxgen\" folder of CD-ROM to selected folder on your computer's hard disk.

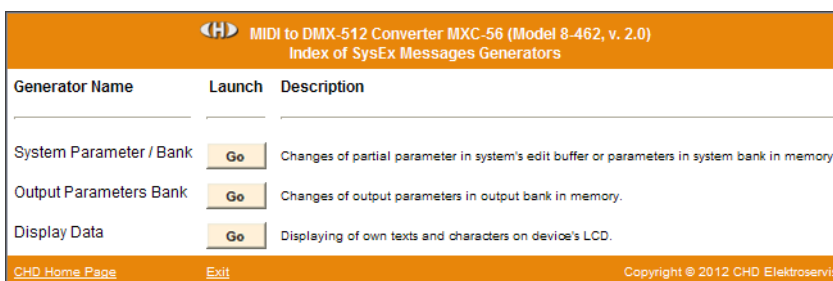
Users of MS-Windows operating system can use self-extracting archive "MXC-56_syxgen.exe". In this case, it is necessary to insert path to target folder of hard disk (by direct input of text or by selecting path by pressing the "... " button) and then to press "OK" button. All needed files are then copied automatically.

Launching SysEx Messages generator can be then done by simply opening "index.html" file in a browser.



SETTING AND PROGRAMMING OF PARAMETERS

After „index.html“ file launching, window with menu of generators is opening. Requested generator starts after clicking on correspond „Go“ button in „Launch“ column.



System Parameters :

Systems parameters control hardware of MXC-56.

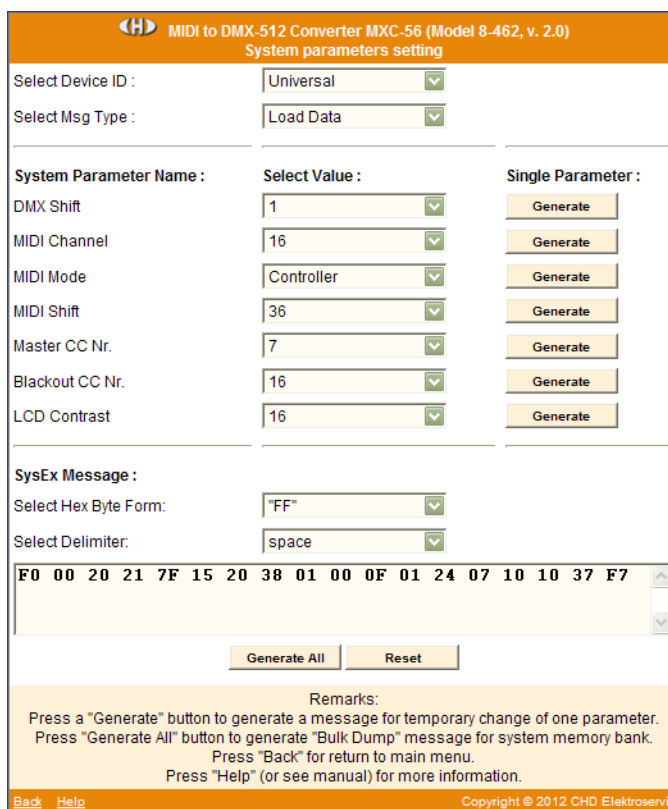
Names of parameters are in left column of generator's table. Values of parameters can be selected in select-boxes in middle column of the table.

"Device ID" is necessary. ID number must be the same as number of actual receiving MIDI channel or universal ID can be used. Universal ID will be accepted anytime by MXC-56 independently on MIDI channel setting.

Select-box "Select Msg Type" selects type of generated message: "Bulk Dump Data Load" for permanent changes of parameters values in system memory bank or "Bulk Dump Data Request" for inquiry for actual content of system memory bank (immediately after the message receiving, the device will transmit "Bulk Dump Data Save" SysEx message as response).

After setting of value of a parameter and clicking on corresponding "Generate" button in right column of the table, SysEx message for temporary change of one parameter is created ("Change System Parameter").

"Generate All" button generates SysEx message for permanent changes of all parameters in internal memory ("Bulk Dump Data Load") or for inquiry for values of all system parameters in internal memory ("Bulk Dump Data Request") in dependence on setting of "Select Msg Type" select-box. Values of all parameters must be set before "Bulk Dump Data Load" message creating!



MIDI System Exclusive Messages are generated in hexadecimal form as a text. Text form of hexadecimal numbers can be chosen by "Hex Byte Form" select-box, delimiter between bytes can be chosen by "Delimiter" select-box. Then it is necessary to transfer the message from text field of the generator to SysEx Msg editor of any musical software (Cubase™, Cakewalk™, Sonar™, Midi OX etc.) and then to transmit it to MXC-56. Text of generated message can be transferred for example by clipboard: Select the text by mouse (cursor), copy it to clipboard by pressing Ctrl+C keys and paste it into editor of musical software by pressing Ctrl+V keys.

"Reset" button clears the text field and sets all select-boxes to default values.

"Back" button in lower left corner of the table closes generator window and returns menu window.

"Help" button in lower left corner of the table opens new window with brief help.

Output Parameters :

Output parameters control partial DMX outputs (channels) directly.

Names of parameters are in left column of generator's table. Values of parameters can be selected in select-boxes in middle column of the table.

"Device ID" is necessary. ID number must be the same as number of actual receiving MIDI channel or universal ID can be used. Universal ID will be accepted anytime by MXC-56 independently on MIDI channel setting.

Number of requested DMX output (channel) is necessary too ("Select Output Nr."). It specifies DMX channel for changes of parameters ("Bulk Dump Data Load" message generating) or for reading of parameters ("Bulk Dump Data Request" message generating).

Select-box "Select Msg Type" selects type of generated message: "Bulk Dump Data Load" for permanent changes of parameters values in chosen output memory bank or "Bulk Dump Data Request" for inquiry for actual content of chosen output memory bank (immediately after the message receiving, the device will transmit "Bulk Dump Data Save" SysEx message as response).

"Generate All" button generates SysEx message for permanent changes of all parameters of selected output in internal memory ("Bulk Dump Data Load") or for inquiry for values of all parameters of selected output in internal memory ("Bulk Dump Data Request") in dependence on setting of "Select Msg Type" select-box. Values of all parameters must be set before "Bulk Dump Data Load" message creating!

MIDI System Exclusive Messages are generated in hexadecimal form as a text. Text form of hexadecimal numbers can be chosen by "Hex Byte Form" select-box, delimiter between bytes can be chosen by "Delimiter" select-box. Then it is necessary to transfer the message from text field of the generator to SysEx Msg editor of any musical software (Cubase™, Cakewalk™, Sonar™, Midi OX etc.) and then to transmit it to MXC-56. Text of generated message can be transferred for example by clipboard: Select the text by mouse (cursor), copy it to clipboard by pressing Ctrl+C keys and paste it into editor of musical software by pressing Ctrl+V keys.

"Reset" button clears the text field and sets all select-boxes to default values.

"Back" button in lower left corner of the table closes generator window and returns menu window.

"Help" button in lower left corner of the table opens new window with brief help.

MIDI to DMX-512 Converter MXC-56 (Model 8-462, v. 2.0)
Output parameters setting

Select Device ID : Universal

Select Output Nr. : 1

Select Msg Type : Load Data

Output Parameter Name : Select Value :

Default Value : 0

Conversion Curve : Linear

Preheat : 0

Limit : 255

Accept Master : On

Accept Blackout : On

SysEx Message :

Select Hex Byte Form : FF

Select Delimiter : space

F0 00 20 21 7F 15 20 00 00 60 00 00 6B F7

Generate All Reset

Remarks:
Press "Generate" button to generate a "Bulk Dump" message for an output memory bank.
Press "Back" for return to main menu.
Press "Help" (or see manual) for more information.

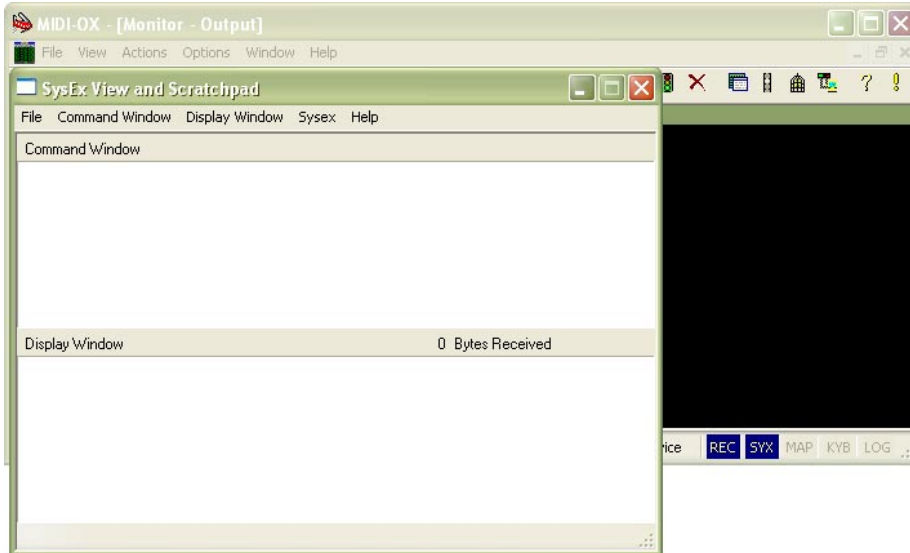
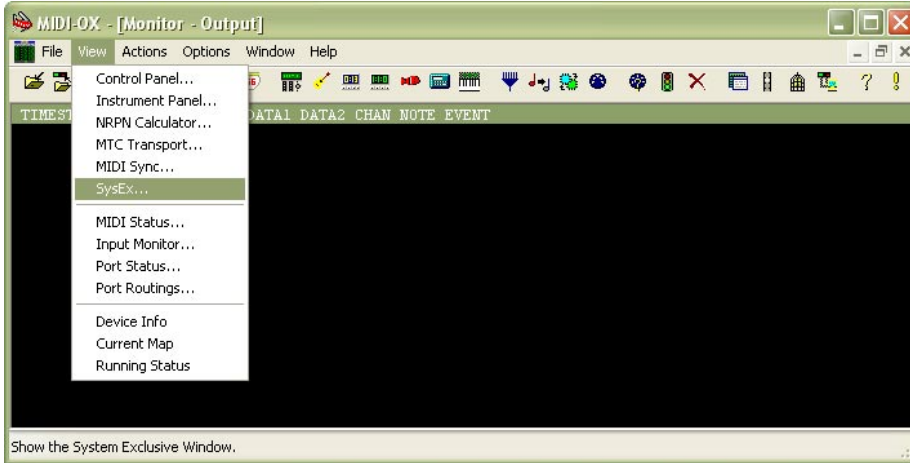
Back Help Copyright © 2012 CHD Elektroserwis



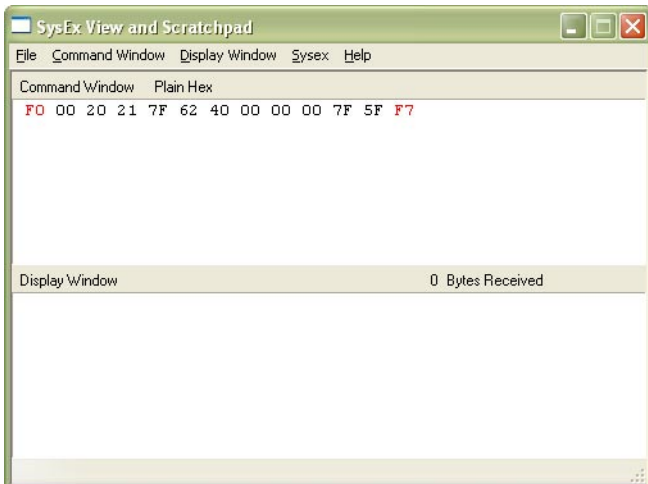
EXAMPLE OF USING WITH “MIDI-OX” SOFTWARE

If you haven't installed a software sequencer in your PC, MIDI-OX program is useful tool for transfer of generated System Exclusive Messages to MXC-56. You can download MIDI-OX freeware from <http://www.midiox.com/>

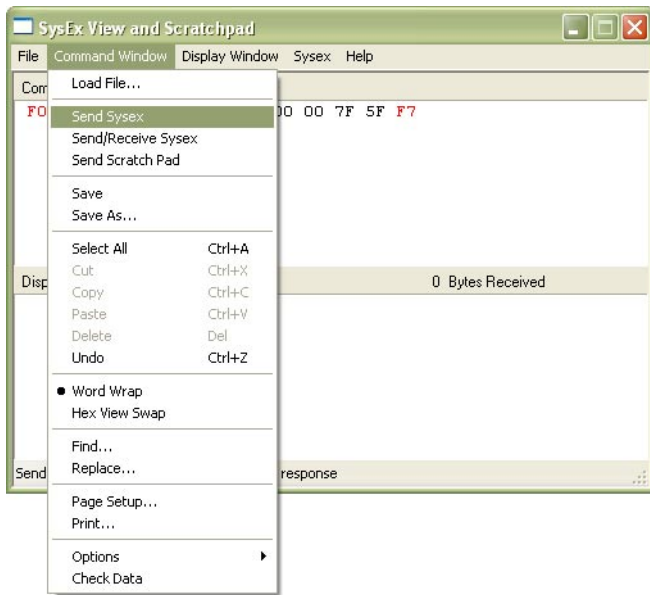
- 1) Interconnect MIDI output of PC with MIDI input of MXC-56 converter and switch the device on.
- 2) Open SysEx window in MIDI OX (choose “SysEx...” in “View” menu):



- 3) Generate required SysEx Msg and copy it into clipboard as described above.
- 4) Click on text field “Command Window” in “SysEx View and Scratchpad” window and insert generated SysEx Msg into the field by Ctrl+V keys pressing.

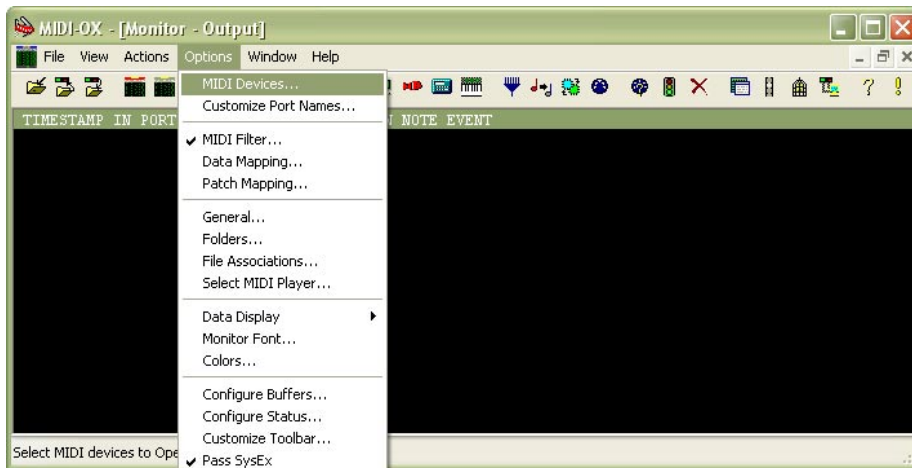


5) Transmit the message to the device by clicking on “Send Sysex” command in “Command Window” menu.



If MIDI-OX is used first time, it is necessary to activate MIDI port to which MXC-56 converter is connected. It must be done for proper data transfer from PC to the interface.

1) Open window for port selection in MIDI OX - select “MIDI Devices” in “Options” menu:



2) For MIDI port activation, click on name of the port in “MIDI Outputs” list.

