

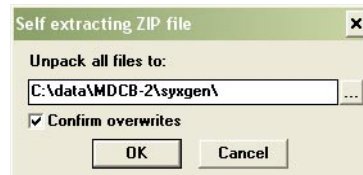
INSTALLATION / LAUNCHING

We have prepared software generator for easy creation of SysEx messages for programming of MXC-56 interface. Any programming message can be created with the help of this generator without difficult calculation of hexadecimal numbers. Generator is based on Java scripts so it is possible to use it with any operation system, but a browser (MS-Explorer, Netscape, etc.) must be installed on the computer.

Program can be launched either directly from supplemental CD-ROM or from hard disk of a PC. If you choose to launch the program from hard-disc, it is necessary to copy "index.html", "MXC-56_system.html", "MXC-56_output.html", "MXC-56_help.html" files and subfolder "media" from "support\sysngen\" folder of CD-ROM to selected folder on your computer's hard disk.

Users of MS-Windows operating system can use self-extracting archive "MXC-56_sysngen.exe". In this case, it is necessary to insert path to target folder of hard disk (by direct input of text or by selecting path by pressing the "..." button) and then to press "OK" button. All needed files are then copied automatically.

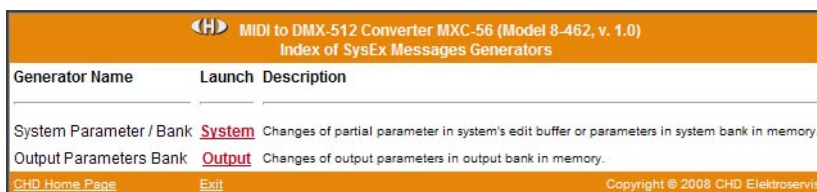
Launching SysEx Messages generator can be then done by simply opening "index.html" file in a browser.



SETTING AND PROGRAMMING OF PARAMETERS

After „index.html“ file launching, window with menu of generators is opening. Requested generator starts after clicking on its name in „Launch“ column.

"Exit" button in lower left corner of the table closes browser window.



System Parameters :

Systems parameters control hardware of MXC-56.

Names of parameters are in left column of generator's table. Values of parameters can be selected in combo-boxes in middle column of the table.

"Device ID" is necessary. ID number must be the same as number of actual receiving MIDI channel or universal ID can be used. Universal ID will be accepted anytime by MXC-56 independently on MIDI channel setting.

After setting of value of a parameter and clicking on corresponding "Generate" button in right column of the table, SysEx message for temporary change of one parameter is created ("Change System Parameter").

"Generate All" button generates SysEx message for permanent changes of all parameters in internal memory ("Data Save / Load"). Values of all parameters must be set before that message creating.

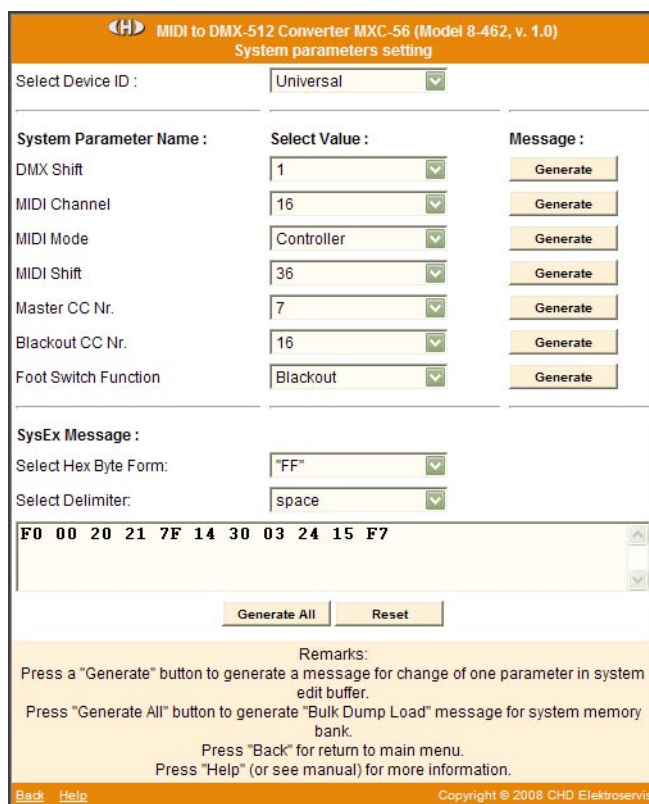
MIDI System Exclusive Messages are generated in hexadecimal form as a text. Text form of hexadecimal numbers can be chosen by "Hex Byte Form" combo-box, delimiter between bytes can be chosen by "Delimiter" combo-box.

Then it is necessary to transfer the message from text field of the generator to SysEx Msg editor of any musical software (Cubase™, Cakewalk™, Sonar™, Midi OX etc.) and then to transmit it to MXC-56. Text of generated message can be transferred for example by clipboard: Select the text by mouse (cursor), copy it to clipboard by pressing Ctrl+C keys and paste it into editor of musical software by pressing Ctrl+V keys.

"Reset" button clears the text field and sets all combo-boxes to default values.

"Back" button in lower left corner of the table closes generator window and returns menu window.

"Help" button in lower left corner of the table opens new window with brief help.





Output Parameters :

Output parameters control DMX outputs directly.

Names of parameters are in left column of generator's table. Values of parameters can be selected in select-boxes in middle column of the table.

"Device ID" is necessary. ID number must be the same as number of receiving MIDI channel (chosen by DIL switch on front panel of MDCB-2) or universal ID can be used. Universal ID will be accepted anytime by MDCB-2 independently on MIDI channel setting.

"Output Nr." is necessary too. It specifies output for changes of parameters.

"Generate All" button generates SysEx message for changes of all parameters of selected output in internal memory ("Data Save / Load"). Values of all parameters must be selected before that message creating.

MIDI System Exclusive Messages are generated in hexadecimal form as a text. Text form of hexadecimal numbers can be chosen by "Hex Byte Form" combo-box, delimiter between bytes can be chosen by "Delimiter" combo-box.

Then it is necessary to transfer the message from text field of the generator to SysEx Msg editor of any musical software (Cubase™, Cakewalk™, Sonar™, Midi OX etc.) and then to transmit it to MXC-56 converter. Text of generated message can be transferred for example by clipboard: Select the text by mouse (cursor), copy it to clipboard by pressing Ctrl+C keys and paste it into editor of musical software by pressing Ctrl+V keys.

"Reset" button clears the text field and sets all select-boxes to default values.

"Back" button in lower left corner of the table closes generator window and returns menu window.

"Help" button in lower left corner of the table opens new window with brief help.

MIDI to DMX-512 Converter MXC-56 (Model 8-462, v. 1.0)
Output parameters setting

Select Device ID : Universal

Select Output Nr. : 1

Output Parameter Name : Select Value :

Default Value : 0

Conversion Curve : Linear

Preheat : 0

Limit : 255

Accept Master : Yes

Accept Blackout : Yes

SysEx Message :

Select Hex Byte Form : "FF"

Select Delimiter : space

F0 00 20 21 7F 14 20 00 00 60 00 00 6C F7

Generate Reset

Remarks:
Press "Generate" button to generate a "Bulk Dump Load" message for an output memory bank.
Press "Back" for return to main menu.
Press "Help" (or see manual) for more information.

Back Help Copyright © 2008 CHD Elektroservis