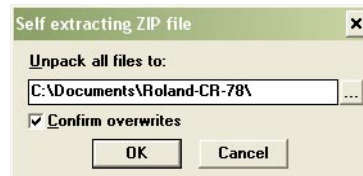


INSTALLATION / LAUNCHING

We have prepared software generator for simple creating of System Exclusive Messages for programming of VS-MIDI interface. Any programming message can be created with help of this generator without difficult calculating with hexadecimal numbers. Generator is based on Java scripts so it is possible to use it with any operational system of PC, but any of browsers (MS-Explorer, Netscape, Fire Fox etc.) must be installed in the computer.

Program can be launched either directly from supplemental CD-ROM or from hard disk of PC. If you choose to launch the program from hard-disc, it is necessary to copy "SH29-M.html", "SH29-M_help.html" files and subfolder "media" from "support\syxgen\" folder of CD-ROM to selected folder on your computer's hard disk.

Users of MS-Windows operating system can use self-extracting archive "SH29-M_syxgen.exe". In this case, it is necessary to insert path to target folder of hard disk (by direct writing of text or by selection after "... " button pressing) and then to press "OK" button. All needed files are then copied automatically.



SETTING AND PROGRAMMING OF INTERFACE

Launching of SysEx Messages generator can be simply done by opening "SH29-M.html" file in a browser. After that, window of generator opens. The window has six parts:

System Parameter Request

After clicking on "Generate" button, SysEx Msg for inquiry to a system parameter value is generated. Requested parameter can be chosen by select-box in the middle column of the table.

System Parameter Load

After clicking on any of "Generate" buttons, SysEx Msg for change of corresponding system parameter value in memory bank is generated. Requested value of the parameter can be chosen by select-box in the middle column of the table.

Note Assignment Request

After clicking on "Generate" button, SysEx Msg for inquiry to assignment of a MIDI note is generated. Number of requested MIDI note can be chosen by select-box in the middle column of the table.

Note Assignment Load

After clicking on "Generate" button, SysEx Msg for change of a MIDI note assignment in drum map is generated. Number of requested note, assigned instrument and borders of its dynamic range can be chosen by select-boxes in the middle column of the table.

Direct Control

SysEx Msg for special system functions controls interface's hardware directly can be generated here. Names of functions are displayed in left column of table. Eventual parameters of the functions can be set by select-boxes in the middle column. Required SysEx message is created by clicking on "Generate" button of chosen function in the right column of the table.

Output System Exclusive Message

MIDI System Exclusive Messages are generated in hexadecimal form as a text. Text form of hexadecimal numbers can be chosen by "Hex Byte Form" combo-box, delimiter between bytes can be chosen by "Delimiter" combo-box. Then it is necessary to transfer the message from text field of the generator to SysEx Msg editor of any musical software (MIDI OX for example – see below) and then to transmit it to the interface. Text of generated message can be transferred for example by clipboard: Select the text by mouse (cursor), copy it to clipboard by pressing Ctrl+C keys and paste it into editor of musical software by pressing Ctrl+V keys.

"Reset" button under the text field clears the text field and sets all select-boxes to their default values.

"Help" button in lower left corner of the table opens new window with brief help.

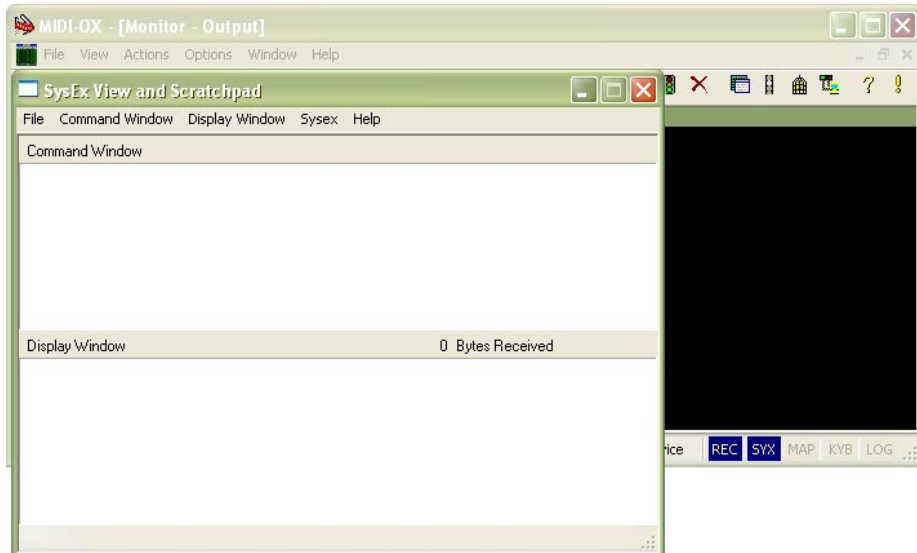
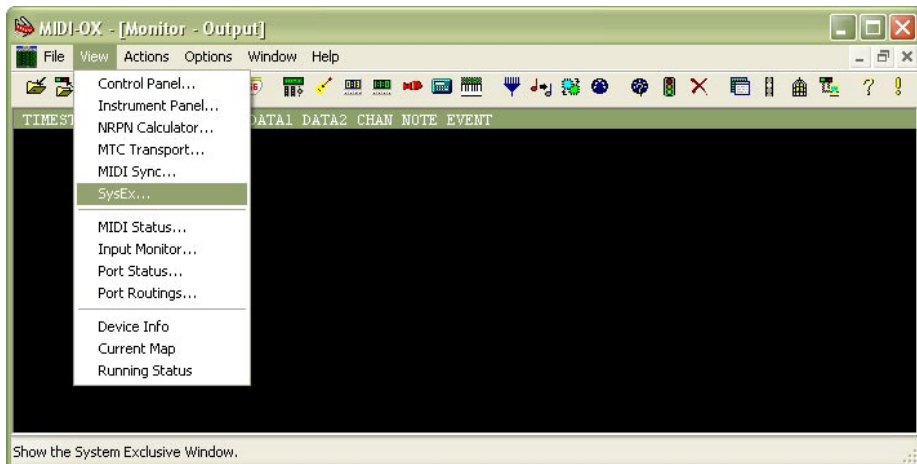
Roland CRX8-M MIDI Interface (Model 8-449, v. 1.0)		
System Parameter Request :	Select Values :	Message :
Select Parameter	MIDI Channel	<input type="button" value="Generate"/>
System Parameter Load :	Select Values :	Message :
MIDI Channel	10	<input type="button" value="Generate"/>
Velocity Priority	Average	<input type="button" value="Generate"/>
Velocity Curve	Linear	<input type="button" value="Generate"/>
Noise Gate Delay	15	<input type="button" value="Generate"/>
Guiro Short Duration	12	<input type="button" value="Generate"/>
Guiro Long Duration	18	<input type="button" value="Generate"/>
Volume Control Mode	Volume CC7	<input type="button" value="Generate"/>
MIDI Tempo Multiplier	x1	<input type="button" value="Generate"/>
Note Assignment Request :	Select Values :	Message :
Select MIDI Note Nr.	0	<input type="button" value="Generate"/>
Note Assignment Load :	Select Values :	Message :
MIDI Note Nr.	0	<input type="button" value="Generate"/>
Assigned Instrument	None	<input type="button" value="Generate"/>
Dynamic Range Min	0	<input type="button" value="Generate"/>
Dynamic Range Max	127	<input type="button" value="Generate"/>
Direct Control :	Select Values :	Message :
Save Edit Buffer		<input type="button" value="Generate"/>
Set DCA	64	<input type="button" value="Generate"/>
LED - Indicator	Off	<input type="button" value="Generate"/>
LED - On Board	Off	<input type="button" value="Generate"/>
SW Ver. Request		<input type="button" value="Generate"/>
Memory Test		<input type="button" value="Generate"/>
Reset	Factory	<input type="button" value="Generate"/>
SysEx Msg :		
Hex Byte Form:	"FF"	
Delimiter:	space	
<div style="border: 1px solid black; padding: 5px;"> F0 00 20 21 7F 65 40 00 00 00 7F 5C F7 </div>		
<input type="button" value="Reset"/>		
Remarks: Message "Bulk Dump Request" or "Bulk Dump Load" or "Direct Control" will be generated if any corresponding "Generate" button is pressed. Click HELP or see manual for more information.		
<input type="button" value="Help"/> Copyright © 2012 CHD Elektroservis		



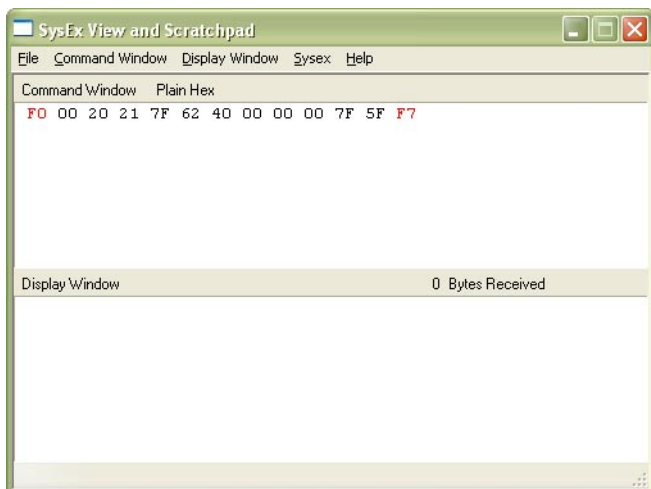
EXAMPLE OF USING WITH "MIDI-OX" SOFTWARE

If you haven't installed a software sequencer in your PC, MIDI-OX program is useful tool for transfer of generated System Exclusive Messages to the interface. You can download MIDI-OX freeware from <http://www.midiox.com/>

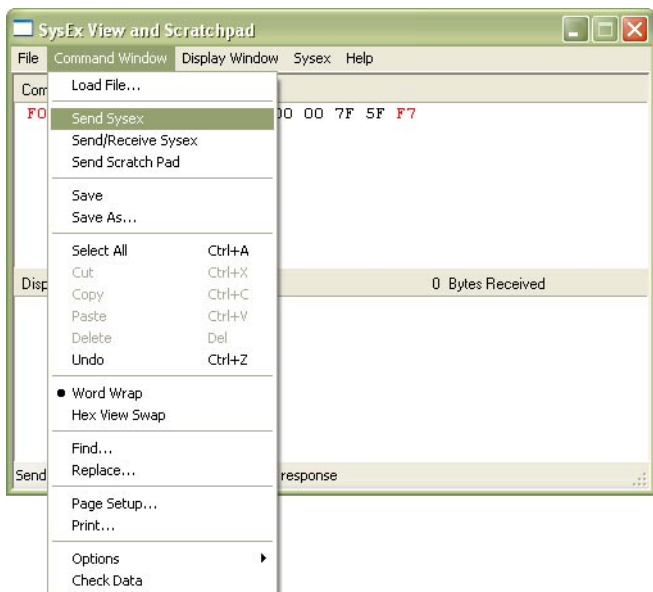
- 1) Interconnect MIDI output of PC with MIDI input of CRX8-M interface and switch the instrument on.
- 2) Open SysEx window in MIDI OX (choose "SysEx..." in "View" menu):



- 3) Generate required SysEx Msg and copy it into clipboard as described above.
- 4) Click on text field "Command Window" in "SysEx View and Scratchpad" window and insert generated SysEx Msg into the field by Ctrl+V keys pressing.

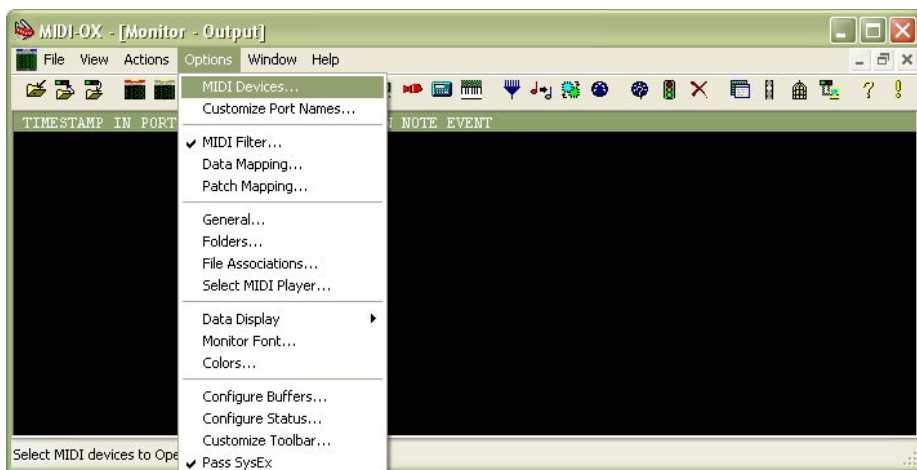


5) Transmit the message into CRX8-M by clicking on "Send Sysex" command in "Command Window" menu.



If MIDI-OX is used first time, it is necessary to activate MIDI port to which CRX8-M interface is connected. It must be done for proper data transfer from PC to the interface.

1) Open window for port selection in MIDI OX - select "MIDI Devices" in "Options" menu:



2) For MIDI port activation, click on name of the port in "MIDI Outputs" list.

