

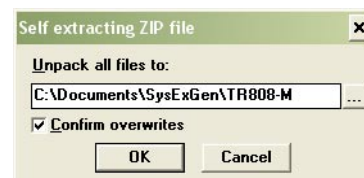
INSTALLATION / LAUNCHING

We have prepared software generator for simple creation of SysEx messages for programming of TR808-M interface. Any programming message can be created with the help of this generator without difficult calculation of hexadecimal numbers. Generator is based on Java scripts so it is possible to use it with any operation system, but a browser (MS-Explorer, Netscape, etc.) must be installed on the computer.

Program can be launched either directly from supplemental CD-ROM or from hard disk of a PC. If you choose to launch the program from hard-disc, it is necessary to copy "tr808-m.html", "tr808-m_help.html" files and subfolder "media" from "support\sysgen" folder of CD-ROM to selected folder on your computer's hard disk.

Users of MS-Windows operating system can use self-extracting archive "tr808-m_sysgen.exe". In this case, it is necessary to insert path to target folder of hard disk (by direct input of text or by selecting path by pressing the "... button) and then to press "OK" button. All needed files are then copied automatically.

Launching of SysEx Msg generator can be then done by simply opening "tr808-m.html" file in a browser.



GENERATING OF MIDI SYSTEM EXCLUSIVE MESSAGES

Generator window opens after "tr808-m.html" file is launched. The window is divided to four parts:

a) Global parameters

SysEx Msg for individual setting of any global parameter is generated here. Names of parameters are displayed in left column of generator table. Values of parameters can be set by combo-boxes in middle column. Generating of SysEx Msg is launched by clicking on corresponding "Generate" button.

b) Program map definition

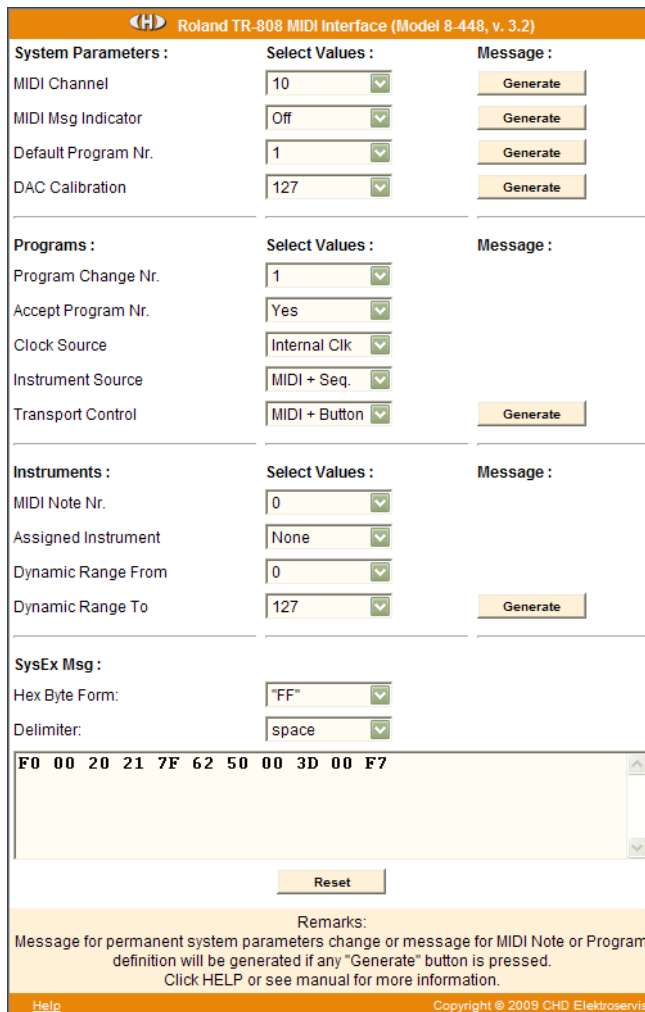
Method of timing and control of TR-808's sequencer and method of launching of TR-808's sound generators for every MIDI program numbers can be chosen in this part. Generating of SysEx Msg is launched by clicking on "Generate" button after the values in all boxes are set. Message for only one of MIDI program numbers is always generated..

c) Assigning of instruments to MIDI notes

Any TR-808's instrument (sound generator) can be assigned to every of MIDI notes Nr. 0 to 120 and its dynamic range can be defined too. Generating of SysEx Msg is launched by clicking on "Generate" button after the values in all boxes are set. Message for only one of MIDI notes is always generated.

d) Output of System Exclusive Message

MIDI System Exclusive Messages are generated in hexadecimal form as a text. Text form of hexadecimal numbers can be chosen by "Hex Byte Form" combo-box, delimiter between bytes can be chosen by "Delimiter" combo-box. Then it is necessary to transfer the message from text field of the generator to SysEx Msg editor of any musical software (Cubase™, Cakewalk™, Sonar™, Midi OX etc.) and then to transmit it to the interface. Text of generated message can be transferred for example by clipboard: Select the text by mouse (cursor), copy it to clipboard by pressing Ctrl+C keys and paste it into editor of musical software by pressing Ctrl+V keys. "Reset" button clears the text field and sets all combo-boxes to default values.



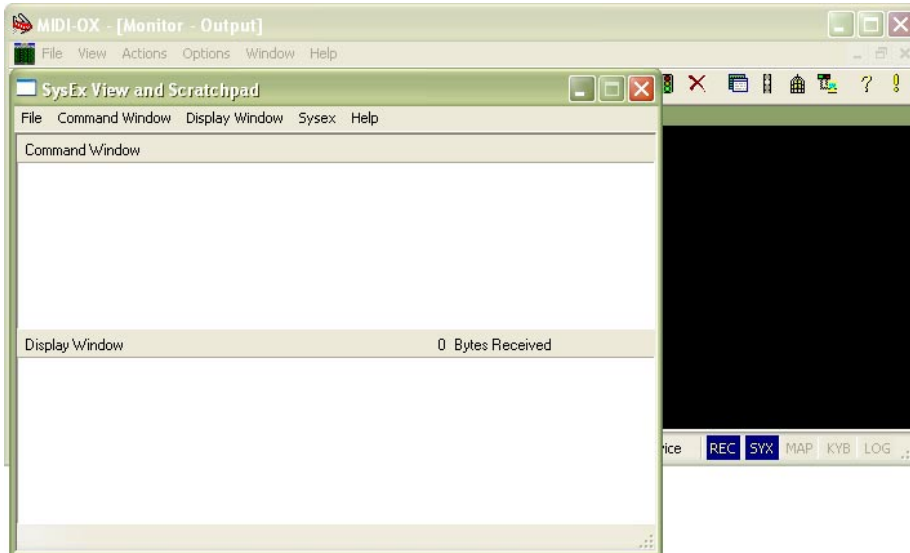
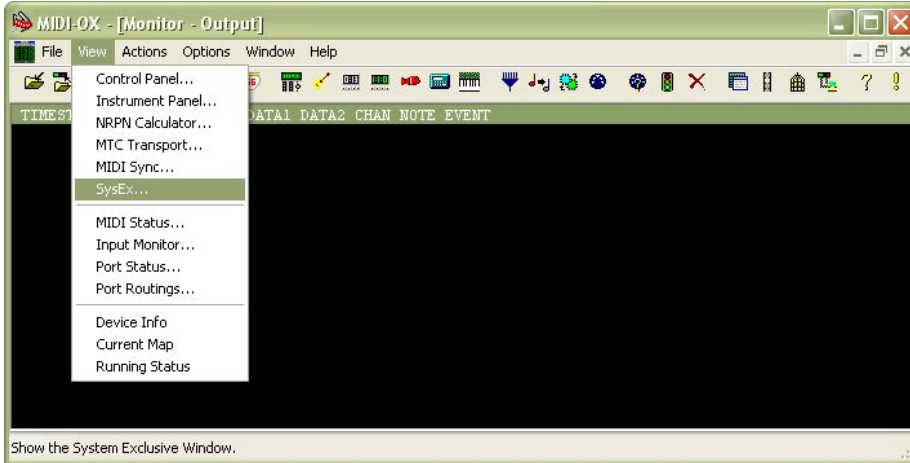
"Help" button in lower left corner of the table opens new window with help. The window contains brief description of particular parameters.



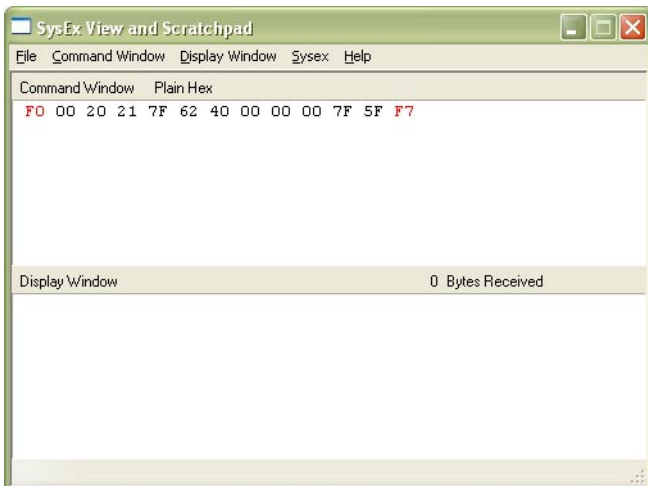
EXAMPLE OF USING WITH "MIDI-OX" SOFTWARE

If you haven't installed a software sequencer in your PC, MIDI-OX program is useful tool for transfer of generated System Exclusive Messages to TR808-M Interface. You can download MIDI-OX freeware from <http://www.midiox.com/>

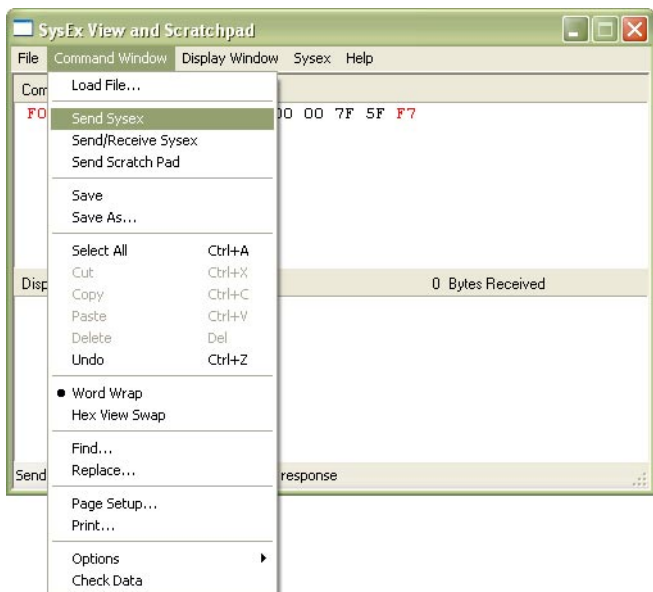
- 1) Interconnect MIDI output of PC with MIDI input of TR808-M interface and switch the interface to MIDI mode.
- 2) Open SysEx window in MIDI OX (choose "SysEx..." in "View" menu):



- 3) Generate required SysEx Msg and copy it into clipboard as described above.
- 4) Click on text field "Command Window" in "SysEx View and Scratchpad" window and insert generated SysEx Msg into the field by Ctrl+V keys pressing.

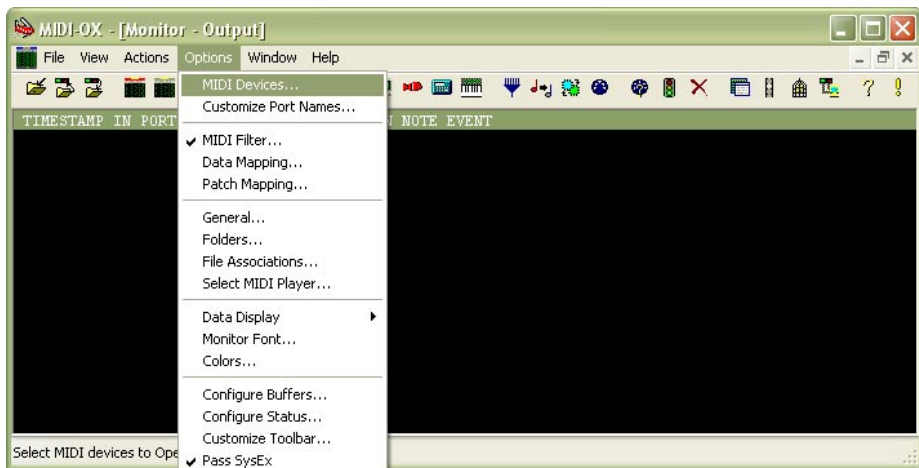


5) Transmit the message into TR808-M by clicking on "Send Sysex" command in "Command Window" menu.



If MIDI-OX is used first time, it is necessary to activate MIDI port to which TR808-M interface is connected. It must be done for proper data transfer from PC to the interface.

1) Open window for port selection in MIDI OX - select "MIDI Devices" in "Options" menu:



2) For MIDI port activation, click on name of the port in "MIDI Outputs" list.

