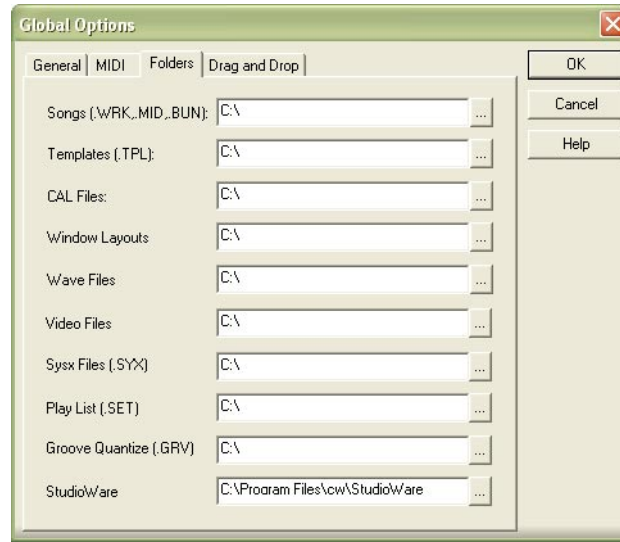


## INSTALLATION

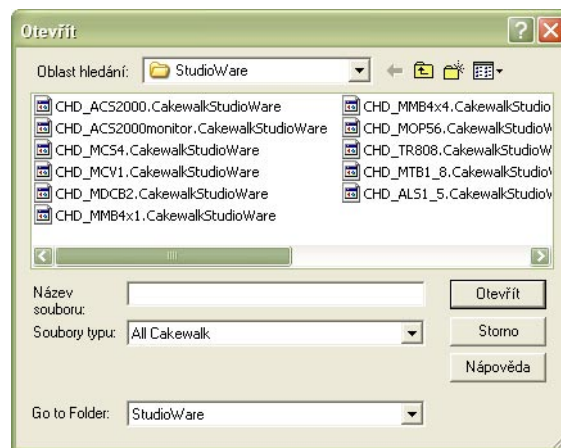
We have prepared "Studio Ware" control panel for users of Cakewalk™ or Sonar™ music software. Using this panel can set and program all functions of TR-808 MIDI interface.

If you choose to use the "Studio Ware" panel, it is necessary to copy "CHD\_TR808.CakewalkStudioWare" file from supplemental CD-ROM to "StudioWare" directory of Cakewalk™ or Sonar™ software on your computer's hard disk.

The path to directory (disc letter included) can be found in menu "Options" → Global → Folders → StudioWare.



The window of control panel can be then opened in any project from menu "File" → Open / select-box "Go to Folder" → StudioWare / file selection / "Open" button.



## USING

File CHD\_TR808.CakewalkStudioWare contains panel for direct playing of TR-808 sound generators, for selection of control and synchronization and for programming of all interface parameters.

MIDI output of PC must be connected to TR-808 MIDI input before the initiation of using. If the PC has more than one MIDI port, it is necessary to select port number, where TR-808 is connected (by "MIDI - PORT" knob). Available ports are displayed by pressing "MIDI - DEVICE" button.

Then it is possible to play sound generators by pressing some of "PLAY INSTRUMENT" buttons. "VELOCITY" slider set the dynamics of played sound.

Slider "SET MIDI SYNC - PROGRAM" set one of 13 available modes of TR-808 control and synchronization (see TR-808 Interface manual). "TEMPO", "TRANSPORT" and "SOUND" indicators then display when the corresponded functions are controlled by MIDI commands.

"HELP" button in right window of panel opens additional window with brief help and information.



## PROGRAMMING OF INTERFACE PARAMETRIS

„SETTING – SYSTEM“ and „SETTING – ASSIGN“ buttons in right window of panel do selection of group of parameters for programming.

### 1) Programming of system parameters

After „SETTING – SYSTEM“ button is pressed, the window with the same name is opened. Number of MIDI channel for communication with interface can be selected by "MIDI CHANNEL" knob and indication of received MIDI commands can be enabled or disabled by "MSG INDICATOR MODE" button.

New values of parameters are then stored in user memory of TR-808 by pressing of "SEND" button.

"HELP" button in right window of panel displays brief help.



### 2) Assigning of instruments and their dynamic range to MIDI notes

After „SETTING – ASSIGN“ button is pressed, "ASSIGN INSTRUMENTS" window is opened. In this window, requested sound generators of TR-808 can be assigned to MIDI notes and dynamic range can be set for given MIDI note.

"NOTE NO." slider selects requested number of MIDI note.

"ASSIGNED INSTRUMENT" slider assigns requested tone generator to selected MIDI note ("NONE" position means that selected MIDI note will be ignored).

Requested dynamic range of selected MIDI note can be set by "LVL SLOPE – MIN" and "LVL SLOPE – MAX" sliders.

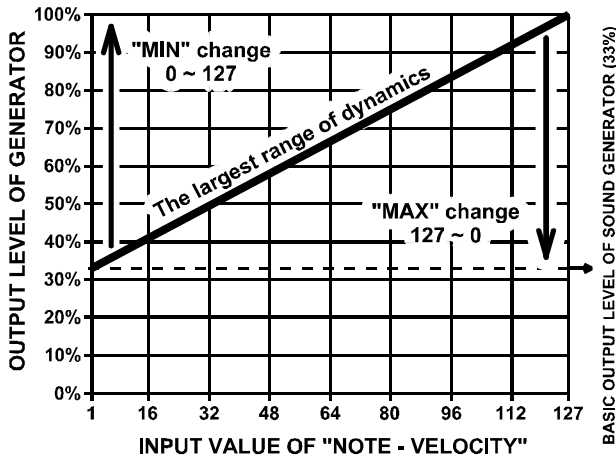
"LEVEL SLOPE - MIN" set output level of generator signal if "Velocity" is 1 and "LEVEL SLOPE - MAX" set output level of generator signal if "Velocity" is 127. For all others values of "Velocity", output level of generator is linearly interpolated between "Level Slope Min" and "Level Slope Max" levels.

There is limitation for dynamic range setting: Maximal level must be greater than or equal to minimal level. If this is not kept, values inserted by user are corrected and warning message is displayed.

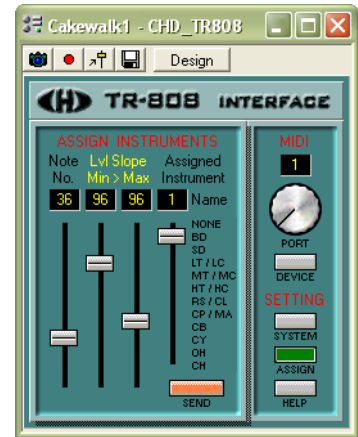




**Setting of dynamic range**



**Warning message**



All parameters must be set to requested values for all MIDI notes – data are transferred to TR-808 at once in one SysEx message. Pressing of „SEND“ button then does transfer of data and their storing in TR-808 user memory. After that, it is possible to repeat programming sequence for next numbers of MIDI notes.

“HELP“ button in right window of panel displays brief help.