

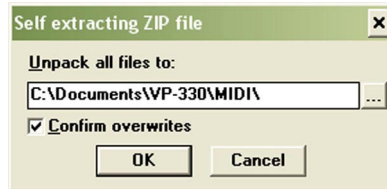
**INSTALLATION / LAUNCHING**

We have prepared software generator for simple creating of System Exclusive Messages for programming of VP330-KBD / RS505-KBD interface. Any programming message can be created with help of this generator without difficult calculating with hexadecimal numbers. Generator is based on Java scripts so it is possible to use it with any operational system of PC, but any of web browsers (MS-Explorer, Google, Fire Fox etc.) must be installed in the computer.

Program can be launched either directly from supplemental CD-ROM or from hard disk of PC. If you choose to launch the program from hard-disc, it is necessary to copy "VP330-RS505-KBD.html", "VP330-RS505-KBD.html\_help.html" files and subfolder "media" from "support\syxgen\ folder of CD-ROM to selected folder on your computer's hard disk.

Users of MS-Windows operating system can use self-extracting archive "VP330-RS505-KBD.html\_syxgen.exe". In this case, it is necessary to insert path to target folder of hard disk (by direct writing of text or by selection after "..." button pressing) and then to press "OK" button. All needed files are then copied automatically.

Launching of SysEx Messages generator then can be simply done by opening "VP330-RS505-KBD.html" file in a browser.



**SETTING AND PROGRAMMING OF INTERFACE PARAMETRS**

Window of generator opens after "VP330-RS505-KBD.html" file opening. The window has four parts:

a) System Parameters Bank

SysEx Msg for inquiry to content of system memory bank (Bulk Dump Data Request) or SysEx Msg for changes of all system parameters values stored in system memory bank (Bulk Dump Data Load) can be generated here. Generating of required SysEx Msg is launched by clicking on correspond button "Message - Generate". Before SysEx Msg for changes of system parameters is generated (Bulk Dump Data Load), requested values of all system parameters must be set. Names of parameters are displayed in left column of generator table. Values of parameters can be set by select-boxes in middle column.

Please see user manual of the interface for info about individual system parameters.

b) Preset Parameters Bank

SysEx Msg for inquiry to content of any preset memory bank (Bulk Dump Data Request) or SysEx Msg for changes of all preset parameters values stored in any preset memory bank (Bulk Dump Data Load) can be generated here. In both cases, number of requested memory bank must be set (with help of "Preset Number" select-box). Generating of required SysEx Msg is launched by clicking on correspond button "Message - Generate". Before SysEx Msg for changes of system parameters is generated (Bulk Dump Data Load), requested values of all preset parameters must be set. Names of parameters are displayed in left column of generator table. Values of parameters can be set by select-boxes in middle column.

Please see user manual of the interface for info about individual preset parameters.

c) Global functions

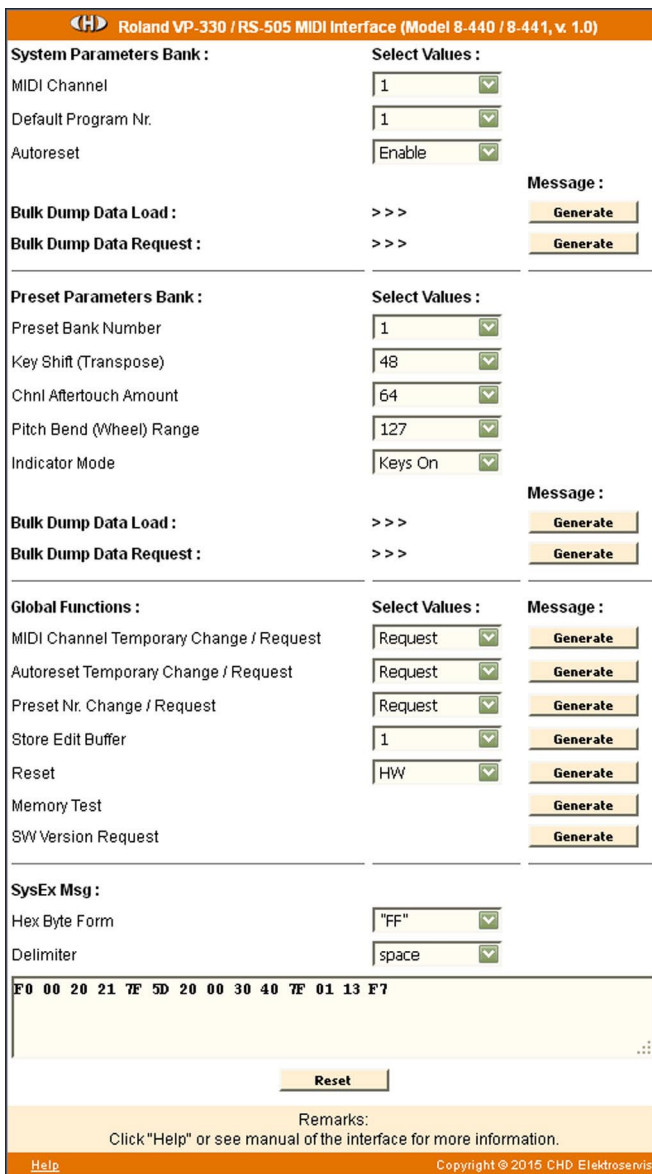
SysEx Msg for special system functions and for functions working with memory banks can be generated here. Names of functions are displayed in left column of generator table. Parameters of the functions can be set by select-boxes in middle column. Required SysEx message is created by clicking on a "Generate" button of chosen function in right column of the table.

Please see description of System Exclusive communication of the interface for info about individual functions.

d) Output System Exclusive Message

MIDI System Exclusive Messages are generated in hexadecimal form as a text. Text form of hexadecimal numbers can be chosen by "Hex Byte Form" combo-box, delimiter between bytes can be chosen by "Delimiter" combo-box. Then it is necessary to transfer the message from text field of the generator to SysEx Msg editor of any musical software (Cubase™, Cakewalk™, Sonar™, Midi OX etc.) and then to transmit it to the interface. Text of generated message can be transferred for example by clipboard: Select the text by mouse (cursor), copy it to clipboard by pressing Ctrl+C keys and paste it into editor of musical software by pressing Ctrl+V keys. "Reset" button under text field clears the text field and sets all select-boxes to their default values.

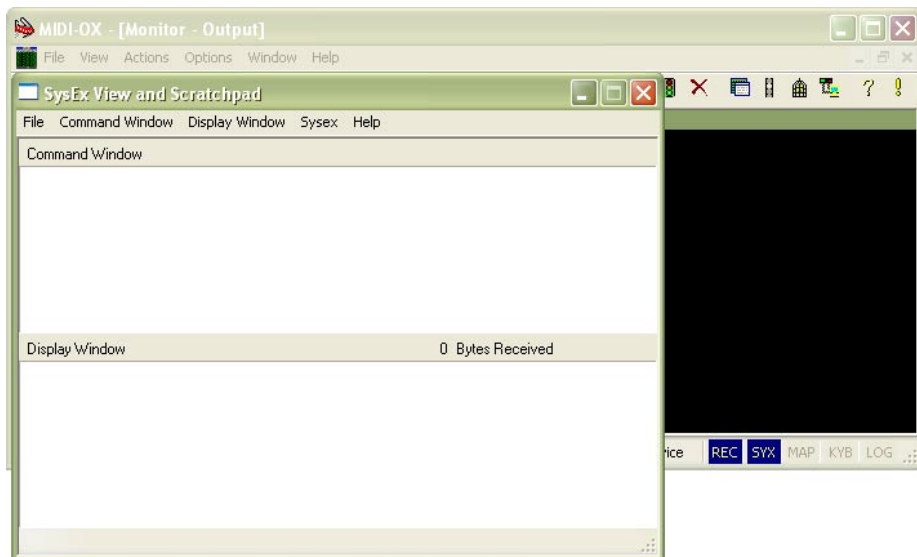
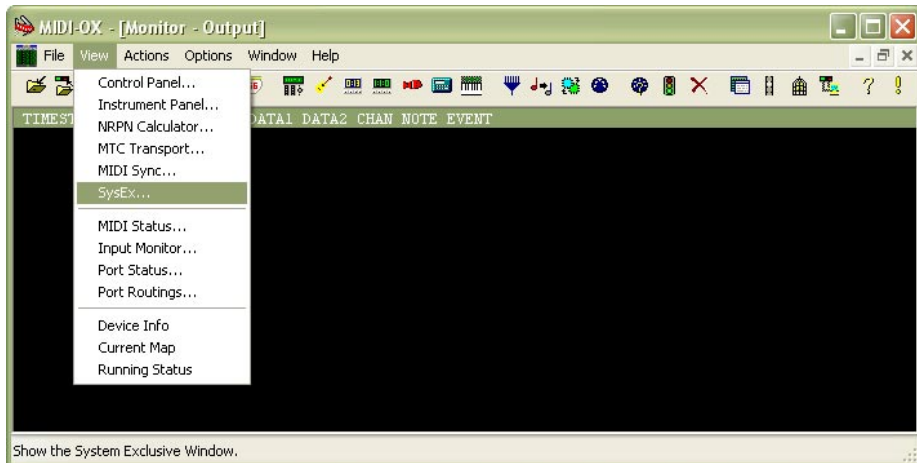
"Help" button in lower left corner of the table opens new window with brief help.



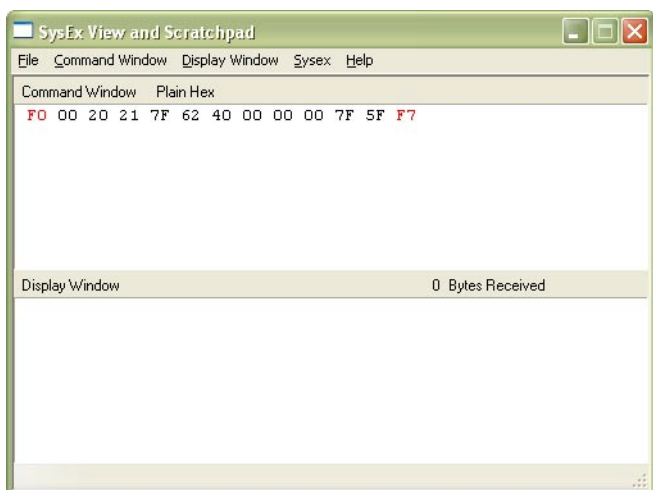
**EXAMPLE OF USING WITH "MIDI-OX" SOFTWARE**

If you haven't installed a software sequencer in your PC, MIDI-OX program is useful tool for transfer of generated System Exclusive Messages to the interface. You can download MIDI-OX freeware from <http://www.midiox.com/>

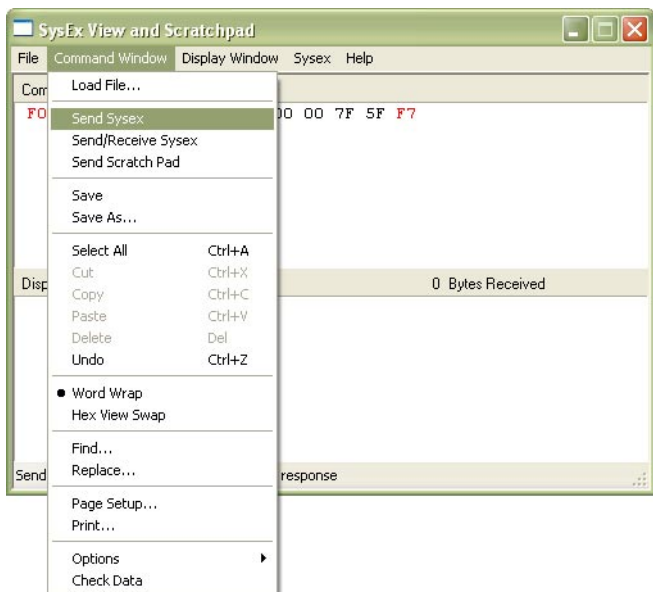
- 1) Interconnect MIDI output of PC with MIDI input of VP330-KBD / RS505-KBD interface and switch the instrument on.
- 2) Open SysEx window in MIDI OX (choose "SysEx..." in "View" menu):



- 3) Generate required SysEx Msg and copy it into clipboard as described above.
- 4) Click on text field "Command Window" in "SysEx View and Scratchpad" window and insert generated SysEx Msg into the field by Ctrl+V keys pressing.

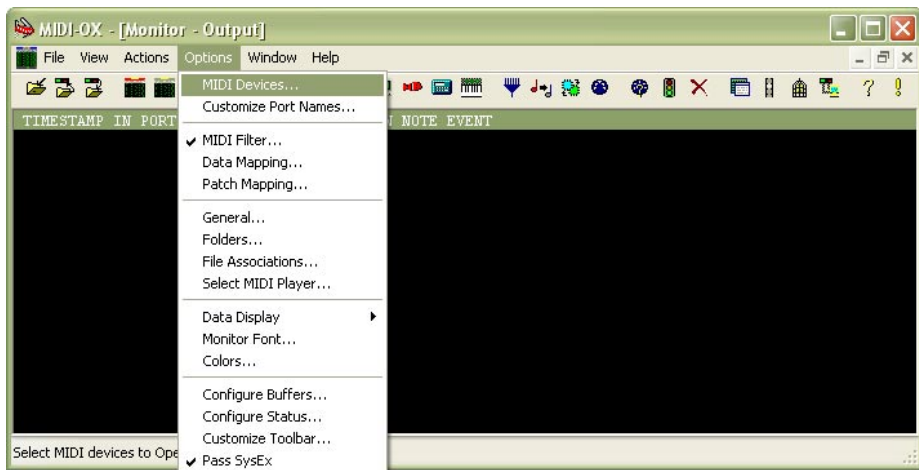


5) Transmit the message into the interface by clicking on "Send Sysex" command in "Command Window" menu.



If MIDI-OX is used first time, it is necessary to activate MIDI port to which the VP330-KBD / RS505-KBD interface is connected. It must be done for proper data transfer from PC to the interface.

1) Open window for port selection in MIDI OX - select "MIDI Devices" in "Options" menu:



2) For MIDI port activation, click on name of the port in "MIDI Outputs" list.

