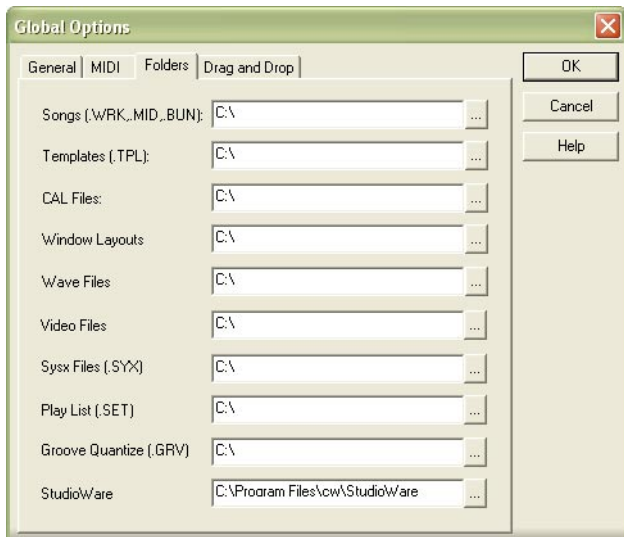


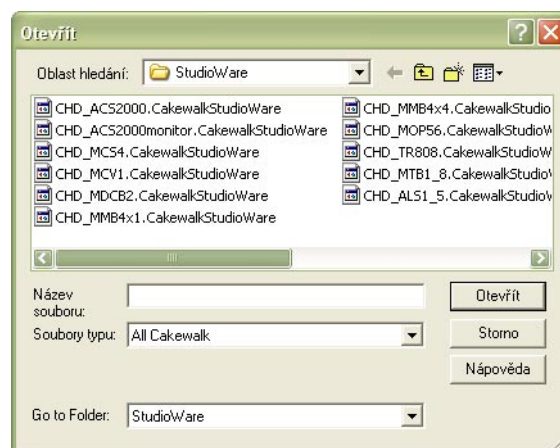
INSTALLATION

We have prepared „Studio Ware“ control panel for users of Cakewalk™ or Sonar™ software. By using this panel, user can set and program all functions of JP4-KBD MIDI interface.



If you choose to use the "Studio Ware" panel, it is necessary to copy "CHD_JP4kbd.CakewalkStudioWare" file from supplemental CD-ROM to "StudioWare" directory of Cakewalk™ or Sonar™ software on your computer's hard disk.

The path to directory (disc letter included) can be found in menu "Options" → Global → Folders → StudioWare.



The window of control panel can be then opened in any project from menu "File" → Open / select-box "Go to Folder" → StudioWare / file selection / "Open" button.

USING

CHD_P6kbd.CakewalkStudioWare

This Studio Ware file contains panel for setting JP4-KBD parameters – this enables programming of the device without complicated creation of MIDI SysEx messages with checksum calculating. More over, it is possible to control functions of JP4-KBD in real time during its operation.

Data is transmitted to MIDI output (port) of PC. It can be selected by MIDI PORT – SELECT knob. All installed MIDI ports will be listed after VIEW DEVICES button is pressed. Selected MIDI output of PC must be connected to JP4-KBD MIDI input before parameters setting.

It is possible to set all parameters of interface. Selected values of parameters are shown on displays placed above sliders of Studio Ware Panel.



a) MIDI Channel

It is possible to choose MIDI channel 1 to 16 (value of parameter is 0 to 15) or OMNI mode (value of parameter is 16).

b) Key Shift

It is possible to choose range of acceptable MIDI notes from 0~48 to 79~127. Slider sets number of lowest acceptable note (value of parameter 0 to 79 directly corresponds to note number).

c) Key Priority

Requested mode of key priority can be chosen by this slider – LAST (parameter value 0), HIGH (parameter value 1), LOW (parameter value 2) or NONE (parameter value 3).

d) Pitch Range

Maximum range of tone bend by Pitch Wheel (Pitch Bend) command can be set from ±0 up to ±24 semitones (value of parameter 0 to 24 corresponds to maximum range of tone bend in semitones).



e) Arpg Rate

Controlling by internal generator of instrument is selected if slider is in „INT“ position (parameter value 0). Positions 127 to 1 (parameter values 1 to 127) select number of MIDI ticks between two clock pulses of arpeggiator. In this case, rate of arpeggiator is derived from tempo of played MIDI song.

Changes of parameters are accepted immediately. But new values of parameters are valid only temporarily (until next change or device restart is done). If you want to store values of all parameters permanently (into internal memory), it is necessary to press SAVE INTO MEMORY button.

“HELP“ button in upper right corner opens additional HELP window with brief usage help and with info about Studio Ware file.