

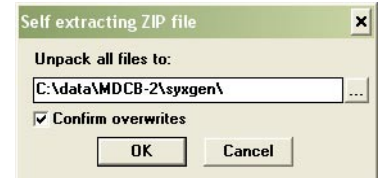
INSTALLATION / LAUNCHING

We have prepared software generator for easy creation of SysEx messages for programming of MDCB-2 interface. Any programming message can be created with the help of this generator without difficult calculation of hexadecimal numbers. Generator is based on Java scripts so it is possible to use it with any operation system, but a browser (MS-Explorer, Netscape, etc.) must be installed on the computer.

Program can be launched either directly from supplemental CD-ROM or from hard disk of a PC. If you choose to launch the program from hard-disc, it is necessary to copy "index.html", "MDCB-2_chord.html", "MDCB-2_help.html", "MDCB-2_preset.html", "MDCB-2_system.html", "MDCB-2_utility.html" files and subfolder "media" from "support\syxgen\" folder of CD-ROM to selected folder on your computer's hard disk.

Users of MS-Windows operating system can use self-extracting archive "MDCB-2_syxgen.exe". In this case, it is necessary to insert path to target folder of hard disk (by direct input of text or by selecting path by pressing the "..." button) and then to press "OK" button. All needed files are then copied automatically.

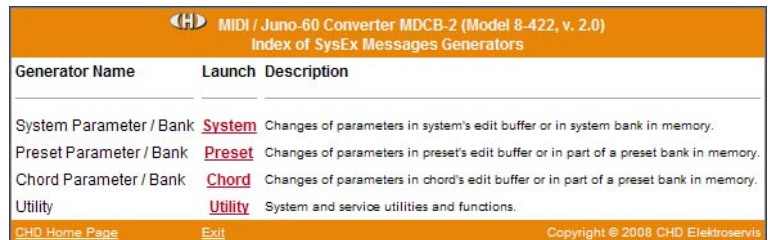
Launching SysEx Messages generator can be then done by simply opening "index.html" file in a browser.



SETTING AND PROGRAMMING OF INTERFACE PARAMETRS

After „index.html" file launching, window with menu of generators is opening. Requested generator starts after clicking on its name in „Launch" column.

"Exit" button in lower left corner of the table closes browser window.



System Parameter / Bank :

Systems parameters control hardware of MDCB-2.

Names of parameters are in left column of generator's table. Values of parameters can be selected in combo-boxes in middle column of the table.

"Device ID" is necessary. ID number must be the same as number of receiving MIDI channel (chosen by DIL switch on front panel of MDCB-2) or universal ID can be used. Universal ID will be accepted anytime by MDCB-2 independently on MIDI channel setting.

After setting of value of a parameter and clicking on corresponding "Generate" button in right column of the table, SysEx message for change of one parameter in system temporary buffer is created (Parameter Load).

"Generate All" button generates SysEx message for changes of all parameters in system memory bank in user memory (Bulk Dump Data Load). Values of all parameters must be selected before that message creating.

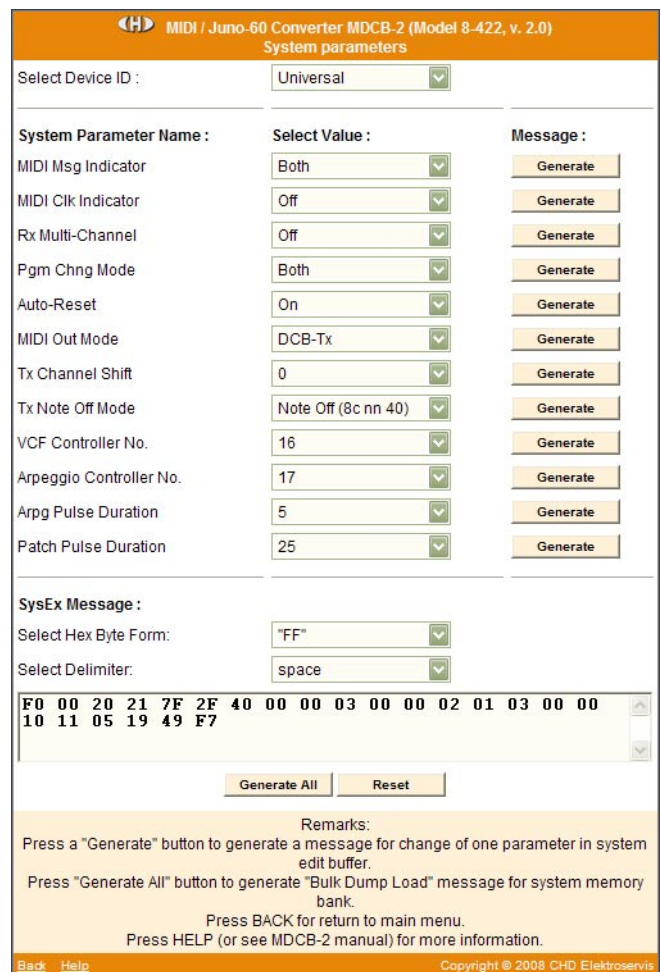
MIDI System Exclusive Messages are generated in hexadecimal form as a text. Text form of hexadecimal numbers can be chosen by "Hex Byte Form" combo-box, delimiter between bytes can be chosen by "Delimiter" combo-box.

Then it is necessary to transfer the message from text field of the generator to SysEx Msg editor of any musical software (Cubase™, Cakewalk™, Sonar™, Midi OX etc.) and then to transmit it to the interface. Text of generated message can be transferred for example by clipboard: Select the text by mouse (cursor), copy it to clipboard by pressing Ctrl+C keys and paste it into editor of musical software by pressing Ctrl+V keys.

"Reset" button clears the text field and sets all combo-boxes to default values.

"Back" button in lower left corner of the table closes generator window and returns menu window.

"Help" button in lower left corner of the table opens new window with brief help.



Preset Parameter / Bank :

Preset parameters control sound creation in Juno-60.

Names of parameters are in left column of generator's table. Values of parameters can be selected in combo-boxes in middle column of the table.

"Device ID" is necessary. ID number must be the same as number of receiving MIDI channel (chosen by DIL switch on front panel of MDCB-2) or universal ID can be used. Universal ID will be accepted anytime by MDCB-2 independently on MIDI channel setting.

Selection of preset number is necessary if SysEx message for changes of all data in a preset memory bank is generated (Bulk Dump Data Load). This combo-box has no effect if SysEx message for change of only one parameter in preset edit buffer is created (Parameter Load).

After setting of value of a parameter and clicking on corresponding "Generate" button in right column of the table, SysEx message for change of one parameter in preset edit buffer is created (Parameter Load).

"Generate All" button generates SysEx message for changes of all parameters in a preset memory bank in user memory (Bulk Dump Data Load). Values of all parameters must be selected before that message creating. Number of memory bank to which the new values will be stored must be selected by "Preset No." combo-box.

MIDI System Exclusive Messages are generated in hexadecimal form as a text. Text form of hexadecimal numbers can be chosen by "Hex Byte Form" combo-box, delimiter between bytes can be chosen by "Delimiter" combo-box.

Then it is necessary to transfer the message from text field of the generator to SysEx Msg editor of any musical software (Cubase™, Cakewalk™, Sonar™, Midi OX etc.) and then to transmit it to the interface. Text of generated message can be transferred for example by clipboard: Select the text by mouse (cursor), copy it to clipboard by pressing Ctrl+C keys and paste it into editor of musical software by pressing Ctrl+V keys.

"Reset" button clears the text field and sets all combo-boxes to default values.

"Back" button in lower left corner of the table closes generator window and returns menu window.

"Help" button in lower left corner of the table opens new window with brief help.

MIDI / Juno-60 Converter MDCB-2 (Model 8-422, v. 2.0)
Preset parameters

Select Device ID :	Universal	
Select Preset No. :	1	

Preset Parameter Name :	Select Value :	Message :
DCO Note Shift	0	Generate
DCO Mode	Poly	Generate
LFO Sync	2) 3) Free	Generate
LFO Waveform	2) 3) Sine 0°	Generate
LFO Rate	2) 3) 64	Generate
LFO Delay	2) 3) 0	Generate
LFO Retrigger	2) 3) Off	Generate
VCF Control Mode	Normal	Generate
VCF Pitch Wheel Range	1) 2) 127	Generate
VCF Cutoff	2) 64	Generate
VCF LFO Amount	2) 3) 64	Generate
VCF MOD Amount	2) 3) 64	Generate
VCF Velocity Polarity	2) 3) Positive Avrg	Generate
VCF Velocity Amount	2) 3) 64	Generate
VCF Aftertouch Polarity	2) 3) Positive Avrg	Generate
VCF Key Aftertouch Amount	2) 3) 0	Generate
VCF Chnl Aftertouch Amount	2) 3) 64	Generate
ARPG Control / Sync	MIDI Clk	Generate
ARPG Rate	120	Generate
ARPG Key Chase	Off	Generate

Notes:

- 1) No effect in "VCF Normal" mode
- 2) No effect in "VCF Controller" mode
- 3) No effect in "VCF Pitch Wheel" mode

SysEx Message :

Select Hex Byte Form: FF

Select Delimiter: space

F0 00 20 21 7F 2F 40 01 00 40 00 00 2F 40 00 00 00
 7F 40 40 40 02 40 02 00 40 01 78 00 25 F7

Generate All
Reset

Remarks:

Press a "Generate" button to generate a message for change of one parameter in preset edit buffer (preset number is not required).

Press "Generate All" button to generate a "Bulk Dump Load" message for a preset memory bank (preset number is required).

Press BACK for return to main menu.

Press HELP (or see MDCB-2 manual) for more information.

Back Help
Copyright © 2008 CHD Elektroservis

Chord Parameter / Bank :

Chord parameters control voices in CHORD working mode.

Voice names are in left column of generator's table. Semitone shift of a voice with regard to active note or voice shutdown respectively can be selected in combo-boxes in middle column of the table.

"Device ID" is necessary. ID number must be the same as number of receiving MIDI channel (chosen by DIL switch on front panel of MDCB-2) or universal ID can be used. Universal ID will be accepted anytime by MDCB-2 independently on MIDI channel setting.

Selection of preset number is necessary if SysEx message for changes of all chord data in a preset memory bank is generated (Bulk Dump Data Load). This combo-box has no effect if SysEx message for change of only one voice in chord edit buffer is created (Parameter Load).

After setting of a voice attribute and clicking on corresponding "Generate" button in right column of the table, SysEx message for change of one voice shift in chord temporary buffer is created (Parameter Load).

"Generate All" button generates SysEx message for changes of attributes of all voices in a preset memory bank in user memory (Bulk Dump Data Load). Attributes of all voices must be selected before that message creating. Number of memory bank to which the new values will be stored must be selected by "Preset No." combo-box.

MIDI System Exclusive Messages are generated in hexadecimal form as a text. Text form of hexadecimal numbers can be chosen by "Hex Byte Form" combo-box, delimiter between bytes can be chosen by "Delimiter" combo-box.

Then it is necessary to transfer the message from text field of the generator to SysEx Msg editor of any musical software (Cubase™, Cakewalk™, Sonar™, Midi OX etc.) and then to transmit it to the interface. Text of generated message can be transferred for example by clipboard: Select the text by mouse (cursor), copy it to clipboard by pressing Ctrl+C keys and paste it into editor of musical software by pressing Ctrl+V keys.

"Reset" button clears the text field and sets all combo-boxes to default values.

"Back" button in lower left corner of the table closes generator window and returns menu window.

"Help" button in lower left corner of the table opens new window with brief help.

MIDI / Juno-60 Converter MDCB-2 (Model 8-422, v. 2.0)
Chord parameters

Select Device ID : Universal
Select Preset No. : 1

Chord Voices :	Select Semitone Shift :	Message :
DCO Chord - 1st Voice	0	Generate
DCO Chord - 2nd Voice	4	Generate
DCO Chord - 3rd Voice	7	Generate
DCO Chord - 4th Voice	12	Generate
DCO Chord - 5th Voice	-5	Generate
DCO Chord - 6th Voice	-12	Generate

SysEx Message :
Select Hex Byte Form: "FF"
Select Delimiter: space

F0 00 20 21 7F 2F 40 02 00 40 44 47 4C 3B 34 09 F7

Generate All Reset

Remarks:
Press a "Generate" button to generate a message for change of one parameter in preset edit buffer (preset number is not required).
Press "Generate All" button to generate a "Bulk Dump Load" message for a preset memory bank (preset number is required).
Press BACK for return to main menu.
Press HELP (or see MDCB-2 manual) for more information.

Back Help Copyright © 2008 CHD Elektroservis

Utility :

Commands for works with memory banks and system functions can be created here.

Names of commands / functions are in left column of generator's table.

Next specification (for commands which need it) is done by combo-boxes in middle column of the table.

"Device ID" is necessary. ID number must be the same as number of receiving MIDI channel (chosen by DIL switch on front panel of MDCB-2) or universal ID can be used. Universal ID will be accepted anytime by MDCB-2 independently on MIDI channel setting.

After eventual setting of a command attributes and clicking on corresponding "Generate" button in right column of the table, requested SysEx message is created.

MIDI System Exclusive Messages are generated in hexadecimal form as a text. Text form of hexadecimal numbers can be chosen by "Hex Byte Form" combo-box, delimiter between bytes can be chosen by "Delimiter" combo-box.

Then it is necessary to transfer the message from text field of the generator to SysEx Msg editor of any musical software (Cubase™, Cakewalk™, Sonar™, Midi OX etc.) and then to transmit it to the interface. Text of generated message can be transferred for example by clipboard: Select the text by mouse (cursor), copy it to clipboard by pressing Ctrl+C keys and paste it into editor of musical software by pressing Ctrl+V keys.

"Reset" button clears the text field and sets all combo-boxes to default values.

"Back" button in lower left corner of the table closes generator window and returns menu window.

"Help" button in lower left corner of the table opens new window with brief help.

Utility Name :	Select Value :	Message :
Select Device ID :	Universal	
Preset Change / Request	Request	Generate
Save Preset / System	1	Generate
Initialize Preset / System	1	Generate
HW Reset	-	Generate
SW Version Request	-	Generate
Factory Reset	-	Generate
Launch Memory Test	-	Generate

SysEx Message :

Select Hex Bbyte Form: "FF"

Select Delimiter: space

F0 00 20 21 7F 2F 50 01 00 00 00 F7

Reset

Remarks:
A "Command" message will be generated if a "Generate" button is pressed.
Press BACK for return to main menu.
Press HELP (or see MDCB-2 manual) for more information.

Back Help Copyright © 2008 CHD Elektroservis