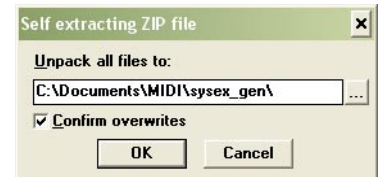


## INSTALLATION / LAUNCHING

We have prepared software generator for simple creating of SysEx messages for changes of MMB 4x1 parameters. Any required message can be created with help of this generator without difficult calculating with hexadecimal numbers. Generator is based on Java scripts so it is possible to use it with any operational system of PC, but any of browsers (MS-Explorer, Netscape, etc.) must be installed in the computer.

Program can be launched either directly from supplemental CD-ROM or from hard disk of PC. If you choose to launch the program from hard-disc, it is necessary to copy "mmb4x1.html", "mmb4x1\_help.html" files and subfolder "media" from "support\syxgen" folder of CD-ROM to selected folder on your computer's hard disk.

Users of MS-Windows operating system can use self-extracting archive "mmb4x1\_syxgen.exe". In this case, it is necessary to insert path to target folder of hard disk (by direct writing of text or by selection after "..." button pressing) and then to press "OK" button. All needed files are then copied automatically.



Launching of SysEx Messages generator then can be simply done by opening "mmb4x1.html" file in a browser.

## SETTING OF MMB 4x1 PARAMETRIS

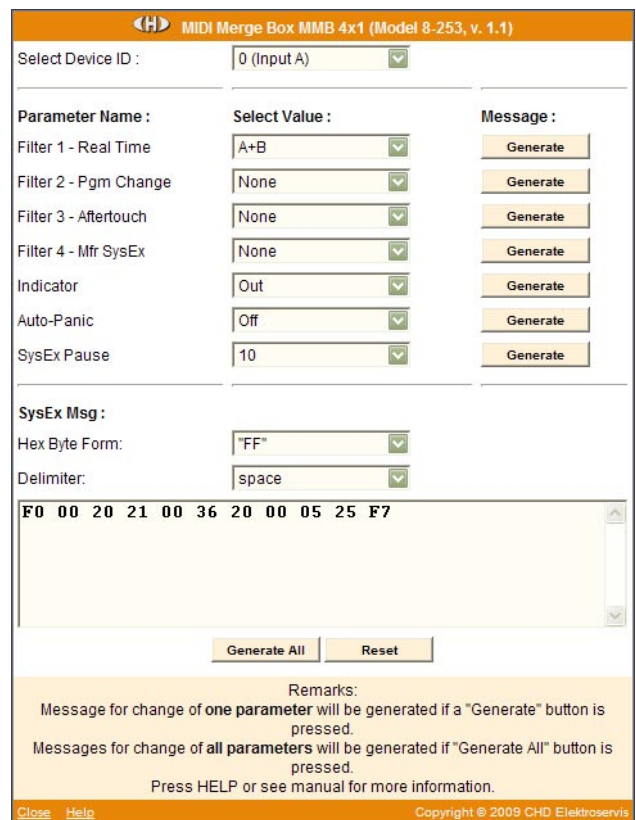
Window of generator opens after "mmb4x1.html" file opening. First, MIDI input of MMB 4x1 to which generated SysEx message will be transmitted must be chosen in "Select Device ID" select-box.

Names of parameters are displayed in left column of generator table. Values of parameters can be set by select-boxes in middle column. Meaning of parameters is exactly described in user manual of interface.

Buttons for start of SyEx message generating (in dependence on selected values of parameters) are in right column of table – click to "Generate" button after value of correspond parameter is set.

Also it is possible to generate SysEx messages for all parameters at once. It can be done by pressing of "Generate All" button.

MIDI System Exclusive Messages are generated in hexadecimal form as a text. Text form of hexadecimal numbers can be chosen by "Hex Byte Form" combo-box, delimiter between bytes can be chosen by "Delimiter" combo-box. Then it is necessary to transfer the message from text field of the generator to SysEx Msg editor of any musical software (Cubase™, Cakewalk™, Sonar™, Midi OX etc.) and then to transmit it to MMB 4x1. Text of generated message can be transferred for example by clipboard: Select the text by mouse (cursor), copy it to clipboard by pressing Ctrl+C keys and paste it into editor of musical software by pressing Ctrl+V keys.



"Reset" button clears text field and sets all select-boxes to default values.

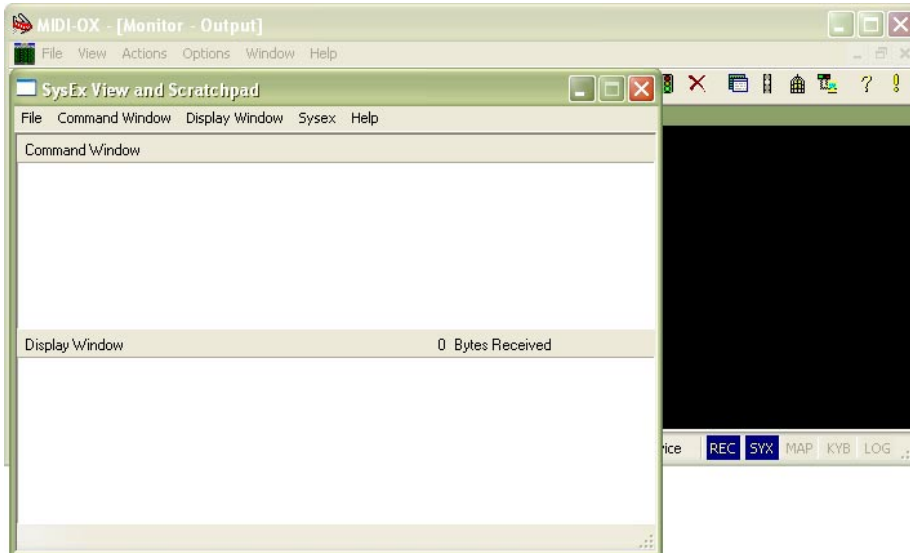
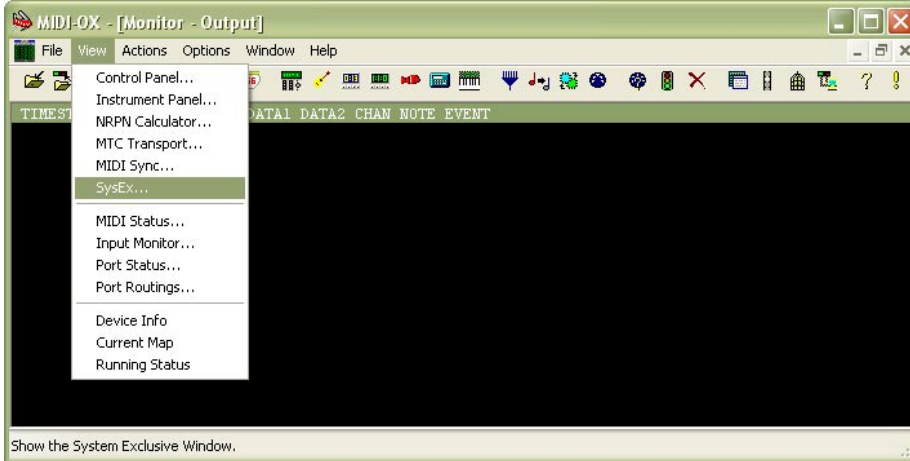
"Help" button in lower left corner of the table opens new window with brief help.

"Close" button in lower left corner of the table closes browser window.

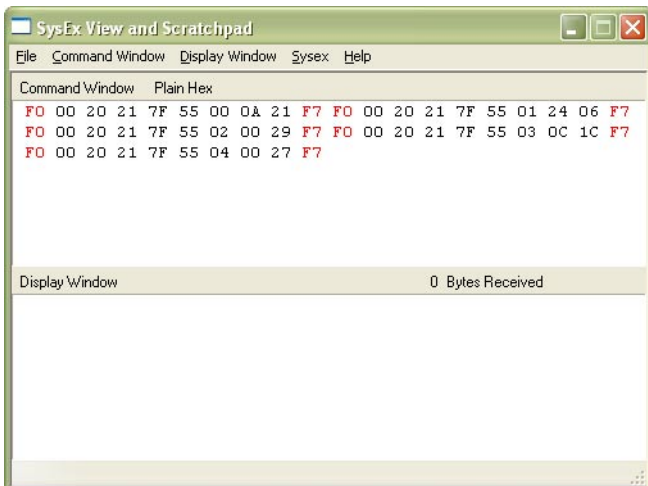
**EXAMPLE OF USING WITH "MIDI-OX" SOFTWARE**

If you haven't installed a software sequencer in your PC, MIDI-OX program is useful tool for transfer of generated System Exclusive Messages to MMB 4x1. You can download MIDI-OX freeware from <http://www.midiox.com/>

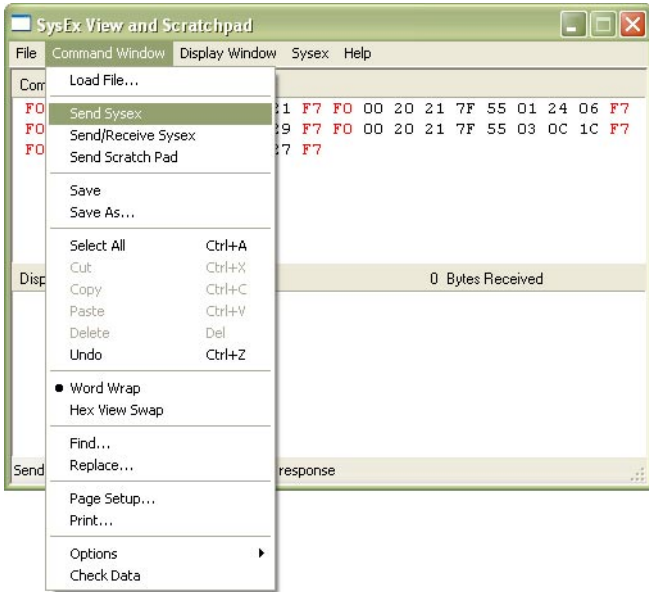
- 1) Interconnect MIDI output of PC with requested input of MMB 4x1 and connect power supply adapter to MMB 4x1.
- 2) Open SysEx window in MIDI OX (choose "SysEx..." in "View" menu):



- 3) Generate required SysEx Msg and copy it into clipboard as described above.
- 4) Click on text field "Command Window" in "SysEx View and Scratchpad" window and insert generated SysEx Msg into the field by Ctrl+V keys pressing.

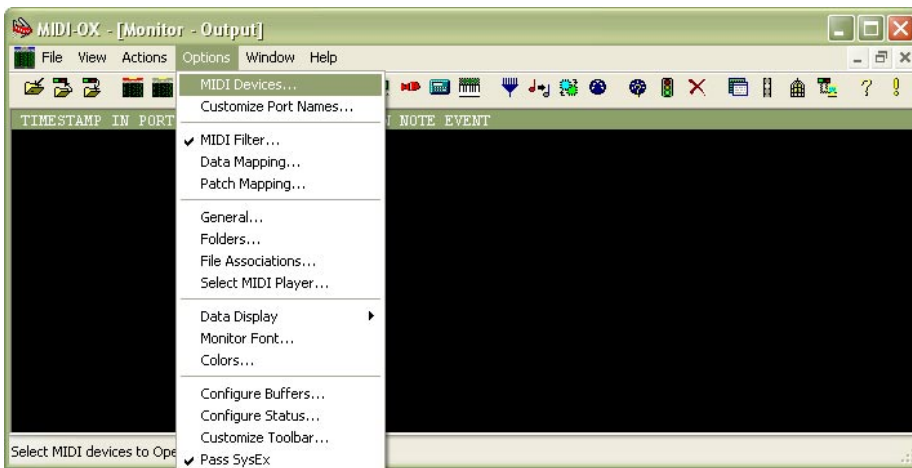


5) Transmit the message into MMB 4x1 by clicking on "Send Sysex" command in "Command Window" menu.



If MIDI-OX is used first time, it is necessary to activate MIDI port to which MMB 4x1 is connected. It must be done for proper data transfer from PC to the interface.

1) Open window for port selection in MIDI OX - select "MIDI Devices" in "Options" menu:



2) For MIDI port activation, click on name of the port in "MIDI Outputs" list.

