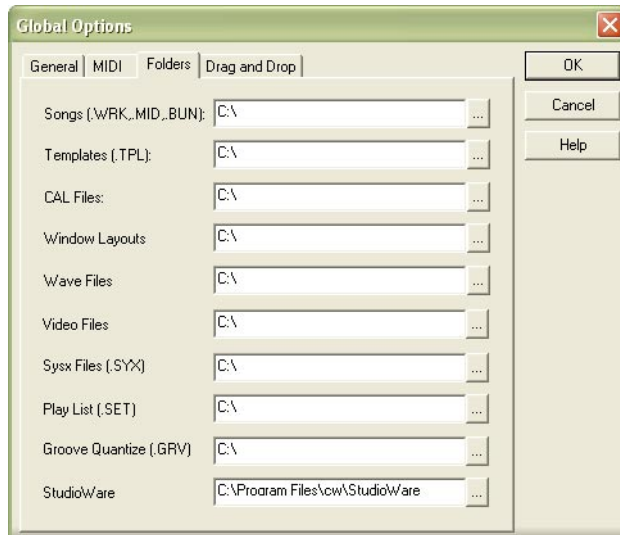


## INSTALLATION

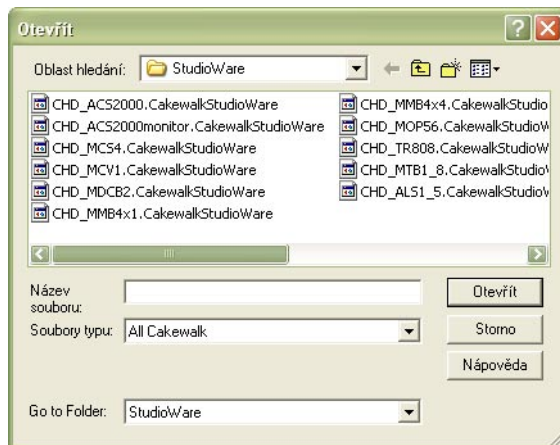
We have prepared "Studio Ware" control panel for users of Cakewalk™ or Sonar™ music software. All parameters of MMB 4x1 MIDI merge box can be set by using this panel.

If you choose to use the "Studio Ware" panel, it is necessary to copy "CHD\_MMB4x1.CakewalkStudioWare" file from supplemental CD-ROM to "StudioWare" directory of Cakewalk™ or Sonar™ software on your computer's hard disk.

The path to directory (disc letter included) can be found in menu "Options" → Global → Folders → StudioWare.



The window of control panel can be then opened in any project from menu "File" → Open / select-box "Go to Folder" → StudioWare / file selection / "Open" button.

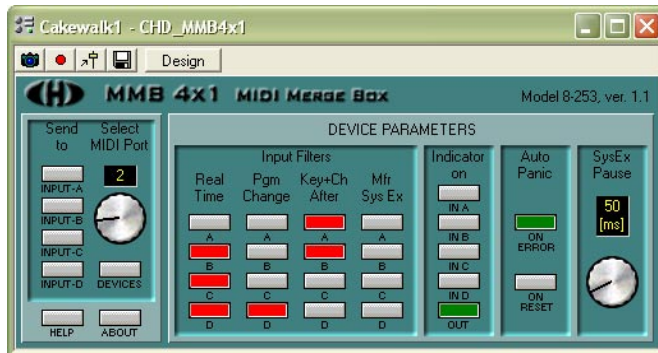


## USAGE

### CHD\_MMB4x1.CakewalkStudioWare

The file contains panel for programming MMB 4x1 parameters – in this manner, MMB 4x1 can be programmed without the need of complicated creation of MIDI SysEx messages and their consecutive broadcasting to the device.

MIDI output of PC must be connected to one of MMB 4x1 MIDI inputs before the initiation of programming. If the PC has more than one MIDI port, it is necessary to select port number, where MMB 4x1 is connected (by "Select MIDI Port" knob). Available ports are displayed by pressing "Devices" button.





Parameters values are set by buttons and by knob in "DEVICE PARAMETERS" window. Set parameters values are determined by status of buttons (off or on) or by position of knob – current value is shown on the display of the knob.

- In block "Input Filters", MIDI data filters of given type can be turned on or off - independently for each of MMB 4x1 inputs.
- In block "Indicator on", indication of MIDI events for MIDI inputs and MIDI output of MMB 4x1 can be enabled or disabled.
- In block "Auto Panic", activation of "Panic" function for any error occurrence or for receiving system command „Reset“ can be enabled.
- In block "SysEx Pause", maximum allowed pause between databytes transferred by System Exclusive Messages is selected.

Meaning of all parameters is described in detail in user's manual of MMB 4x1. It is always necessary to select values of all parameters in "DEVICE PARAMETERS" window - data are transferred to MMB 4x1 at once in one SysEx message.

Transmission of new values of all parameters to MMB 4x1 is done by pressing of one of "Sent to" buttons (depending on which of MMB 4x1 MIDI inputs is PC connected to). New values are temporarily (only until the device is turned off) stored in MMB 4x1 user's memory.

"Help" and "About" buttons open additional windows with brief help and panel information.